



# Kibbutz Holit

Reconstruction projects options for the Italian Communities  
through KKL Italia

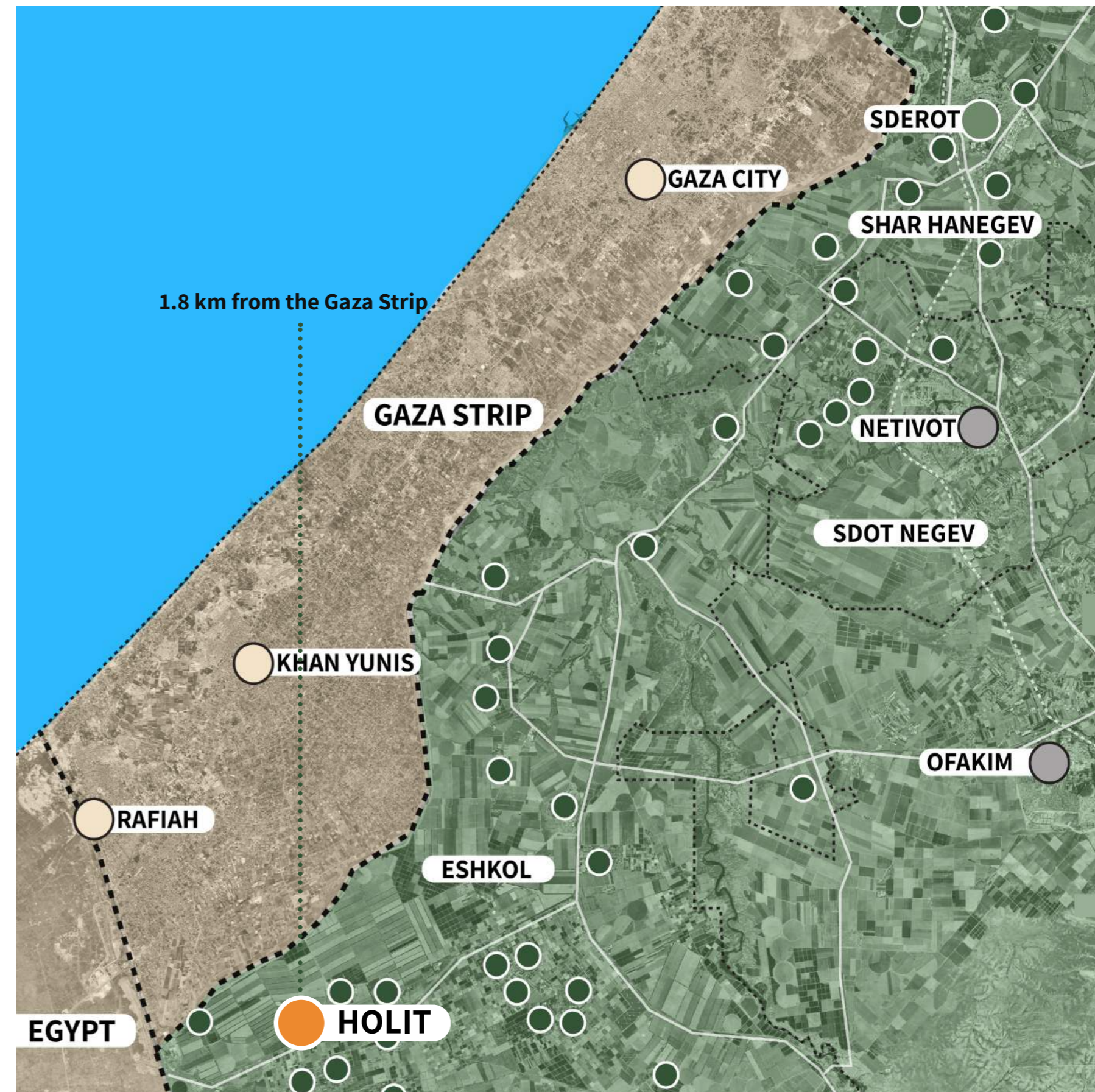
# Holit

**There is perhaps no greater symbol for the steep price of peace as Kibbutz Holit. Relatively young and highly idealistic, the kibbutz was originally built in 1977 in Sinai. With the historic peace agreement, the kibbutz was resettled in its current location in the Eshkol Regional Council.**

Since 2011, Holit was growing at a steady pace with accelerated growth occurring since 2019, as it reached its highest population of 83 family households with 50 children.

**The Kibbutz community is diverse, with many of the original members working in agriculture. Many of the younger members work in a number of free professions.**

While diverse, Holit has created a tightly-knit, purpose-driven multi-generational community that embodies the spirit of the “Beautiful Israeli”.









**Holit on October 7th**  
Damage and Destruction



Members and workers who were murdered on Oct.7th

October 7th

The kibbutz suffered a devastating loss on October 7th. 15 members and 2 Thai workers were slaughtered. 6 others were kidnapped to Gaza and still remain in captivity. 20% of Holit's members were simply wiped out in one day.



Adi Vital Kaploun, 33



MSG. Avi Korin, 56



Dr. Hayim Katzman, 32



Moshe Ridler, 92



Petru Boskov, 35



Roland Charles  
Joseph Sultan, 68



Dr. Ronit Tal Sultan, 55



Tehila Katabi, 32



Debbie Shahr  
Troen Mathias, 50



Shlomi Mathias, 47



Lily Keisman, 63



Parinya Tamkang, 37



Meir Elharar, 58



Liz Elharar Halfon, 46



Oudom Chan, 24

# PROJECT 01

## Therapy Space

The “therapy space” project is situated in the heart of the kibbutz and includes the rehabilitation of the clinic and its surroundings.

### Clinic

Psychologic and post-traumatic therapy  
Chinese medicine  
Cosmetic Clinic

### Outdoor Therapy

A zen and therapeutic garden for the community

### Safety

Additional antimissile reinforcement to make the building safe

### Re-use

Re-use of an old building in the heart of the kibbutz.

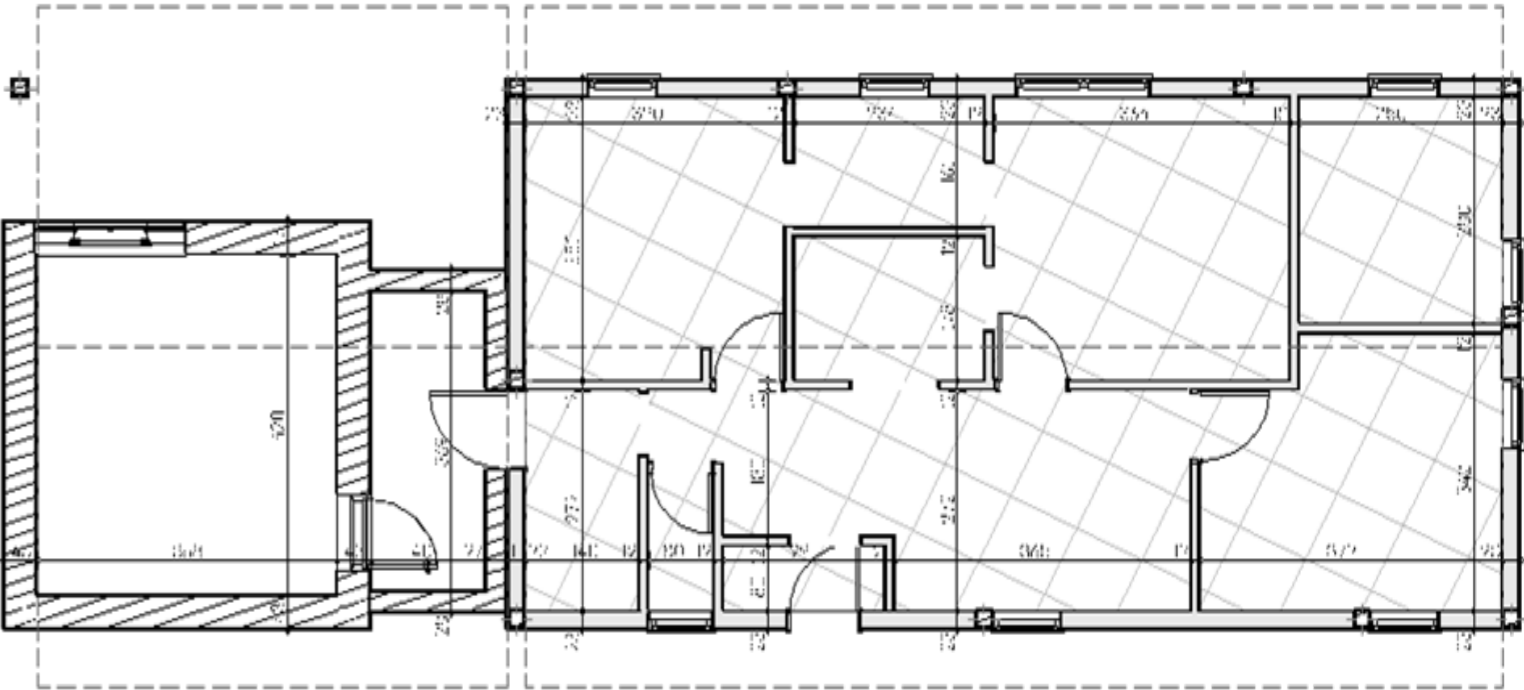


Project Data

Project type	Clinic Building rehabilitation + Therapeutic garden
Program	Clinic + fortified structure + accessibility + garden
Status	Early planning
Area	900 sqm (including landscape)
Built Area	120 sqm

Estimated Cost

STAGE	CONTENT	COST
Planning	Full team	9,000 €
Management	Management + supervision	9,000 €
Construction	Building + landscape	158,000 €
Unforeseen		9,000 €
TOTAL		185,000 €



Holit clinic - Yorai Cohen



Holit clinic - Kot Architects

## PROJECT 02

### After-school Space

The “afterschool space” project is situated in the heart of the kibbutz and includes the rehabilitation of the cafeteria building and the garden for the afterschool activities

#### Cafeteria

Small cafeteria building used by kibbutz youth at lunch time

#### Active Garden

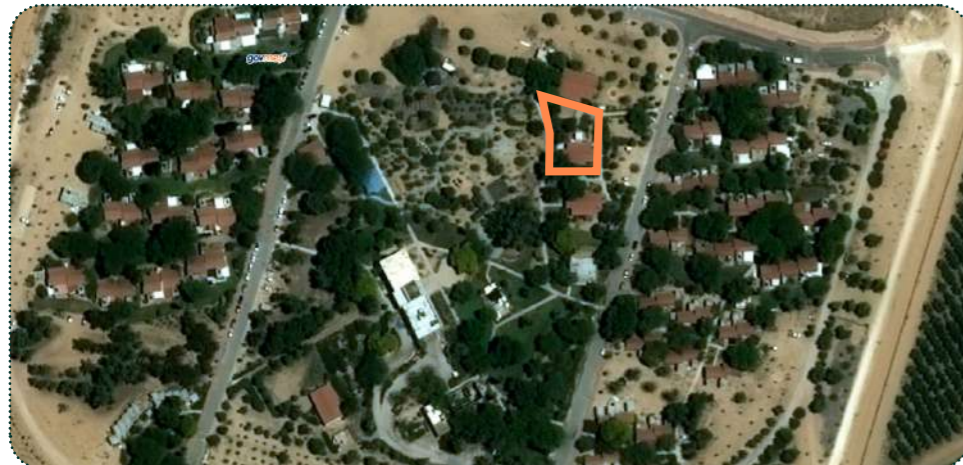
Garden for children educational activities and lunch time break

#### Safety

Additional antimissile reinforcement to make the building safe

#### Re-use

Re-use of an old building in the heart of the kibbutz.

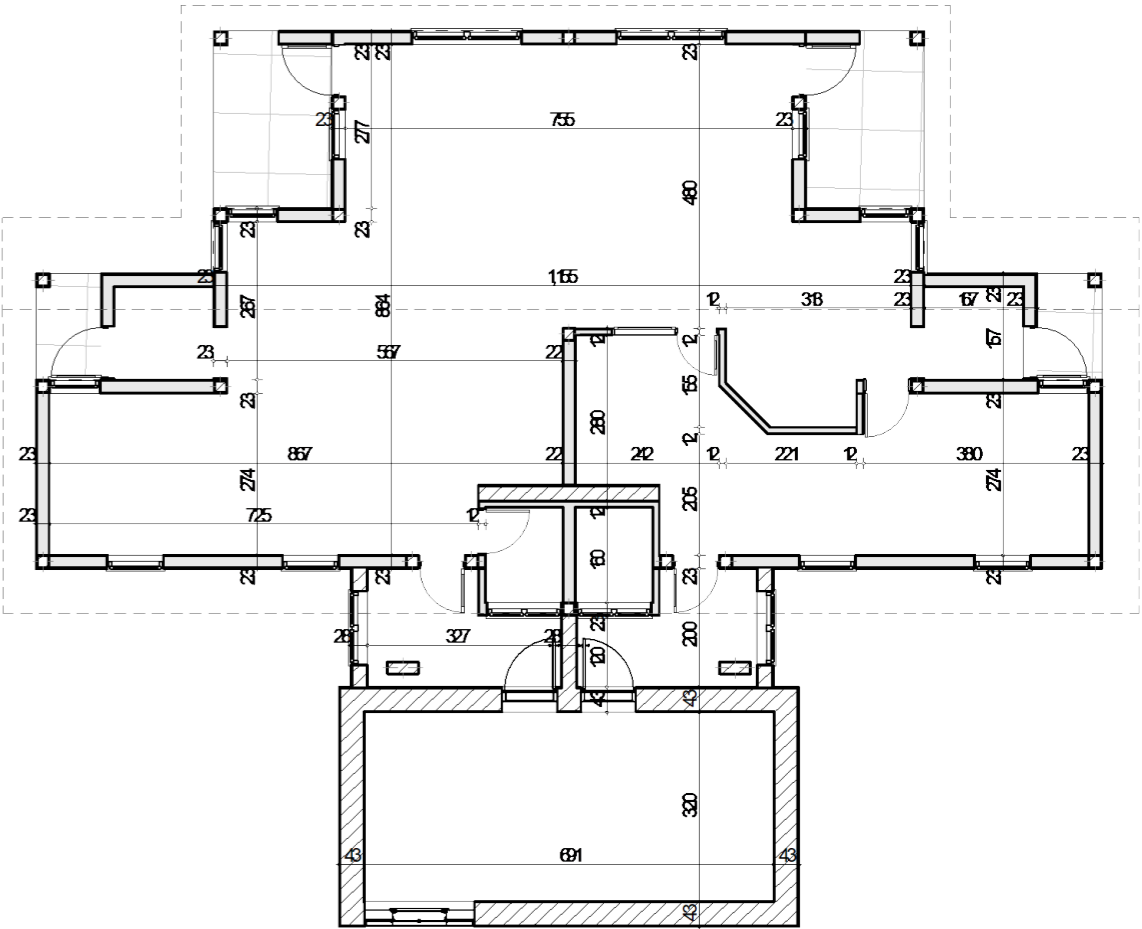


# Project Data

Project type	Cafeteria Building rehabilitation + educational garden
Program	Cafeteria + fortified structure + accessiblity + garden
Status	Early planning - Rehabilitation
Area	1000 sqm (including landscape)
Built Area	140 sqm

## Estimated Cost

STAGE	CONTENT	COST
Planning	Full team	11,000 €
Management	Management + supervision	11,000 €
Construction	Building + landscape	187,000 €
Unforeseen		11,000 €
TOTAL		220,000 €



Holit cafeteria - Yorai Cohen



El Terreno educational center - Vertebral